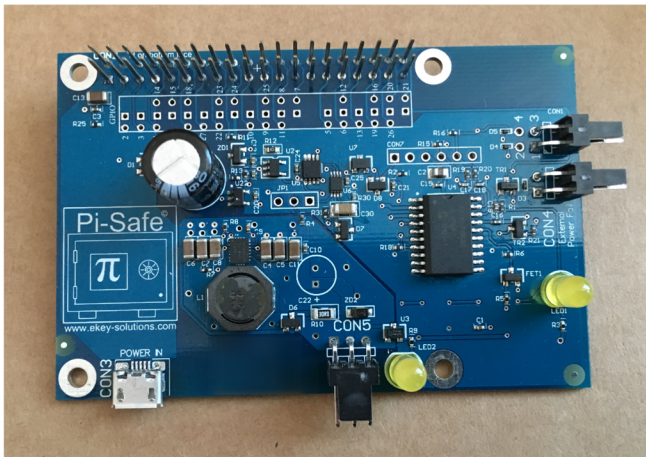
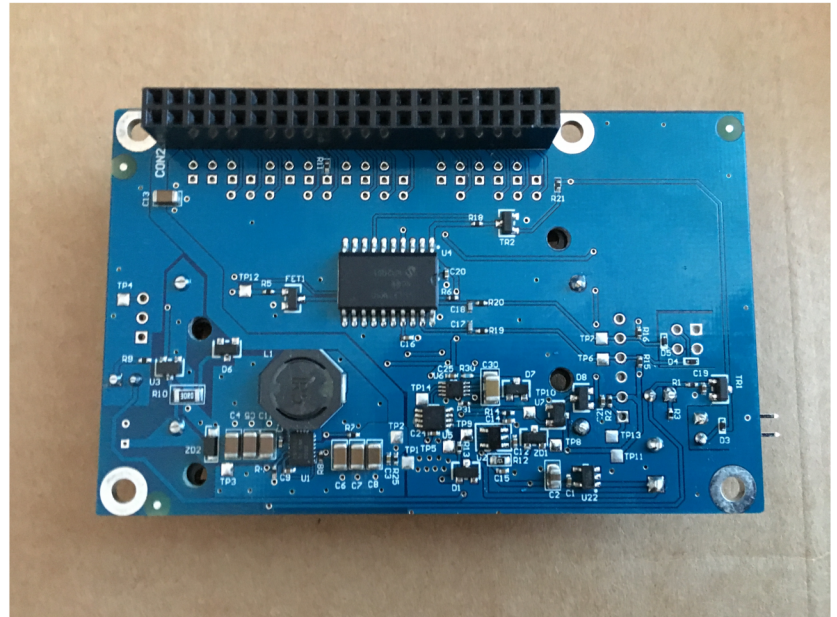


Pi-Safe[®]

Ekey Solutions Ltd
Unit 324 Springvale Ind Est
Cwmbran NP44 5BR
United Kingdom



Integral PSU: 5V @ 2A , 2.4MHz switching, 96% efficiency

Voltage Regulation: >5% (5V +/- 0.25V)

Peripherals: All Active In Shutdown Mode

Activation Trigger: Main 5V Falling Edge

Activation Delay: <50µS PSU Start Up Time: <300µS

Battery Type: 2 x NiMH Nickel Metal Hydride (2400mAh)

Charge Time: 36 Hours Trickle Charge

Discharge Period (Assuming No Charge / 5V @ 1A Load)

65 Off's (60 Seconds Power) to 390 Off (20 Seconds Power)

All GPIO User Selectable (Manual Switch Override Included)

Logic Or Microprocessor Shutdown (Single Or Combination)

User Set Timing Range: 20, 30, 40, 50 or 60 Seconds



www.ekey-solutions.com

Call: 01633 868400 / 07855 820732

Available in two versions, the Pi-Safe offers a secure way to power down your device without any risk to your data. When mains power is suddenly disconnected from a computer by a power cut for example, there is a very high possibility of data corruption. The Pi-Safe provides power from a rechargeable battery which allows time for a correct pre programmed shutdown to occur. The Pi-Safe also recharges the battery and the shutdown time and GPIO pin can be selected by the user. No programming of the Pi-Safe is necessary to allow any shutdown requirements to be performed.